

Directions to Scobie & McIntosh (Bakery Engineers) Ltd, Birstall

Exit M62 at Junction 27

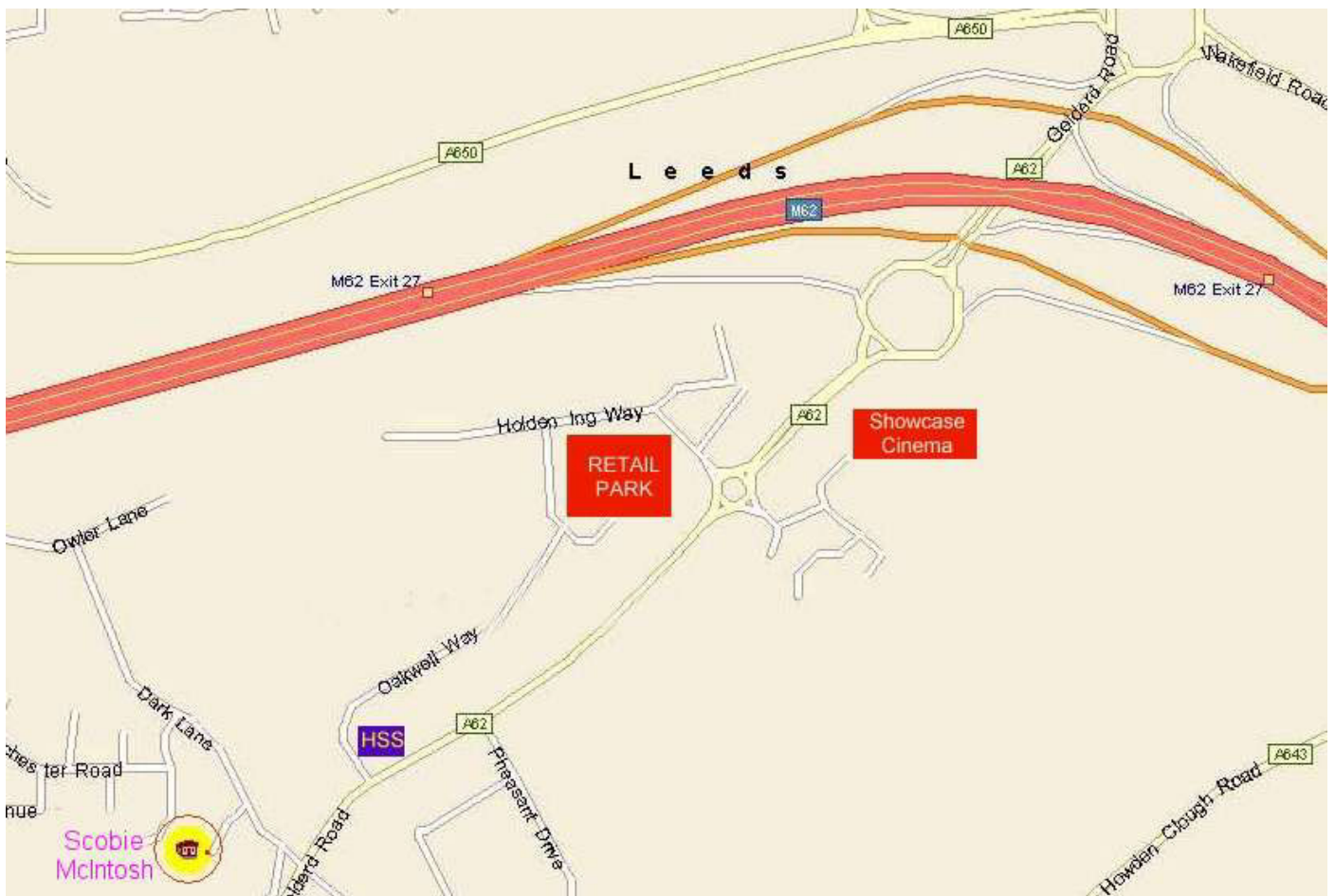
Take A62 towards Bradford and Huddersfield

Go over first roundabout (retail park and cinema complex) and continue down Gelderd Road

Go past HSS hire shop and past Oakwell Way, over the traffic lights and then take the next road on the right, Dark Lane.

Oakwell Business Centre is the second small road on the Left Hand side after about 50 meters, immediately after turning left, turn right through a set of gates.

The **Scobie & McIntosh (Bakery Engineers) Ltd** sign is on the gates. An Interlink building should be in front of you. **Scobie & McIntosh (Bakery Engineers) Ltd** is located in the last building in the complex in the right hand corner.



Scobie & McIntosh (Bakery Engineers) Ltd, Oakwell Business Centre, Dark Lane, Birstall, West Yorkshire, WF17 9LW

TEL +44 (0) 1924 432940